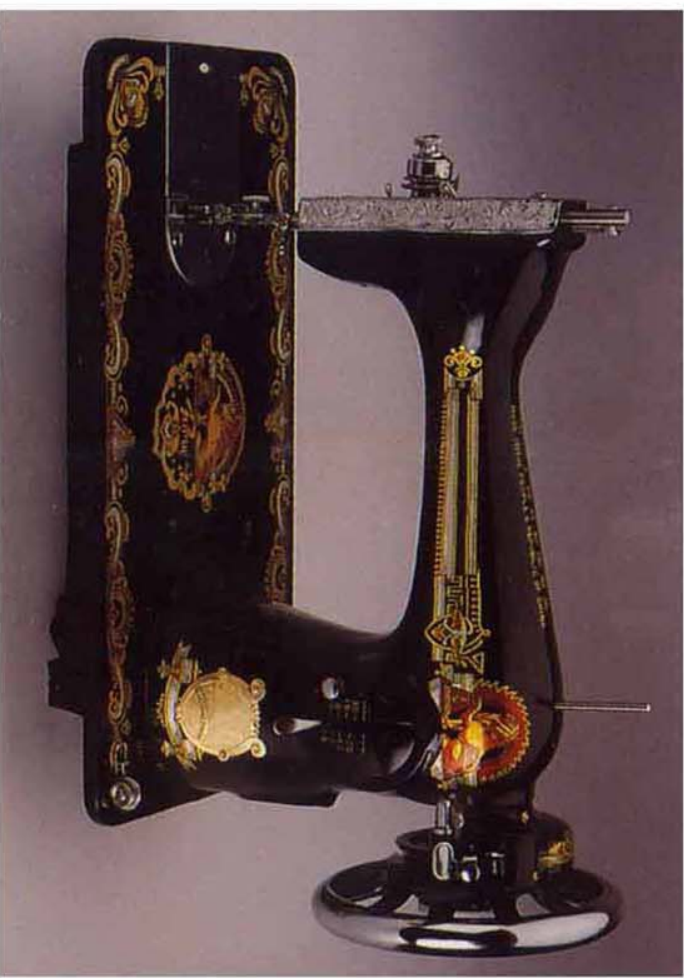




This machine is equipped with cam motion take-up lever, oscillating shuttle and lock so that the stitching can be adjusted according to different requirements.

- **Model JA2-1** Reversible Type. This machine is equipped with snap out shuttle race, convenient in installing and releasing the shuttle hook.
- **Model JA2-2** has the similar structure and model as JA2-1, except that it is equipped with a drop feed mechanism.



JA2 series

總公司Head office :
立欣針車實業有限公司
LUNA INDUSTRIAL CO., LTD.
臺灣22061新北市板橋區四川路2段16巷9號5樓
5F., No.9, Ln. 16, Sec. 2, Sichuan Rd., Banqiao Dist.,
New Taipei City 22061, Taiwan
(LEADER INDUSTRIAL AREA)
TEL : 886-2-8966-5577 FAX : 886-2-8966-5443
E-MAIL : info@lunasew.com
luna0510@ms13.hinet.net
HTTP : //www.lunasew.com

服務處Factory :
立欣(寧波)針車有限公司
LUNA (NINGBO) SEWING MACHINE CO., LTD.
中國浙江省寧波市鄞州區姜山鎮星火科技園區環鎮北路13號
No. 13 HuanZhen (N) Road, Jiangshan Town
XingHuo Scientific & Technical Area
Yin Zhou District Ningbo City, China
TEL : 86-574-8845-3458 8845-3468
FAX : 86-574-8845-3478
E-MAIL : lunaningbo@lunasew.com